















WRANGELIA  
PENCILLATA



ULVA  
LACTUCA



UDOTHEA  
DESFONTAINI



SPHAEROCOCCUS  
CORONOPIFOLIUS





SINUOSA  
COLPOMENIA



SARGASSUM  
HORNSCHUCHI



PSEUDOLITHOPHYLLUM  
EXPANSUM



POSIDONIA  
OCEANICA



PLOCAMIUM  
COCCINEUM



PINNATA  
PTEROCLADIA



PEYSSONNELIA  
SQUAMARIA



PADINA PAVONIA



NITOPHYLLUM  
PUNCTATUM



LITHOPHYLLUM  
TORTUOSUM



LIAGORA  
VISCIDA



JANIA  
RUBENS







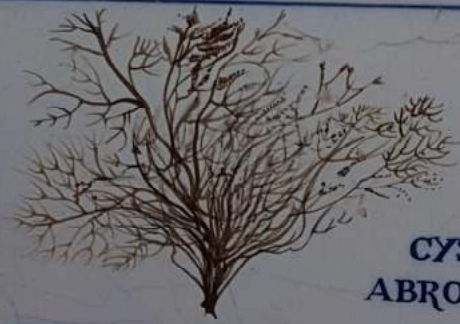


ECTOCARPUS  
SILICULOSUS



DICTYOTA  
FORMA IMPLEXA





CYTOSEIRA  
ABROTANIFOLIA



CORALLINA  
OFFICINALIS



CODIUM  
TOMENTOSUM



CLADOSTEPHUS  
VERTICILLATUS

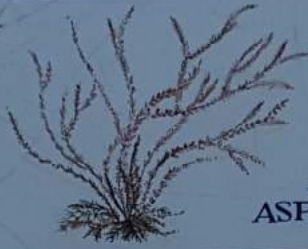




**BRYOPSIS  
BALBISIANA**



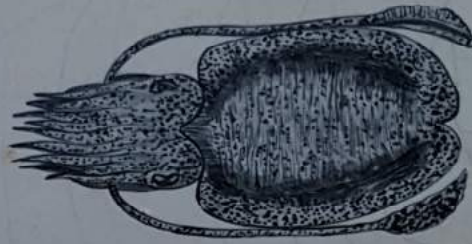
**BORNETIA  
SECUNDIFLORA**



ARMATA  
ASPARAGOPSIS



ACETABULARIA  
MEDITERRANEA

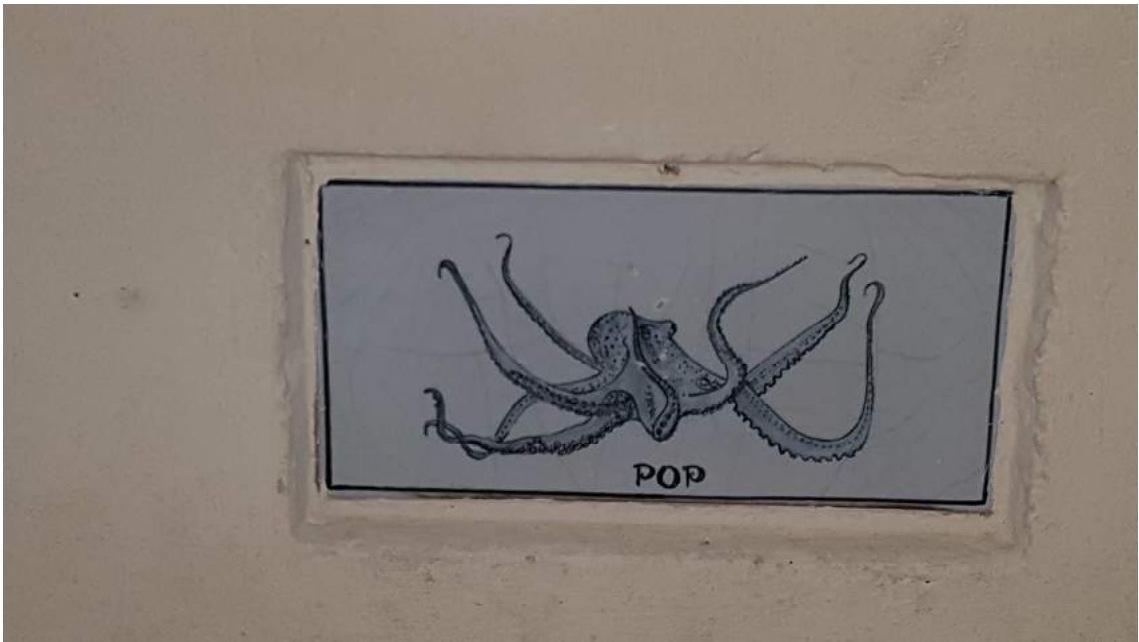
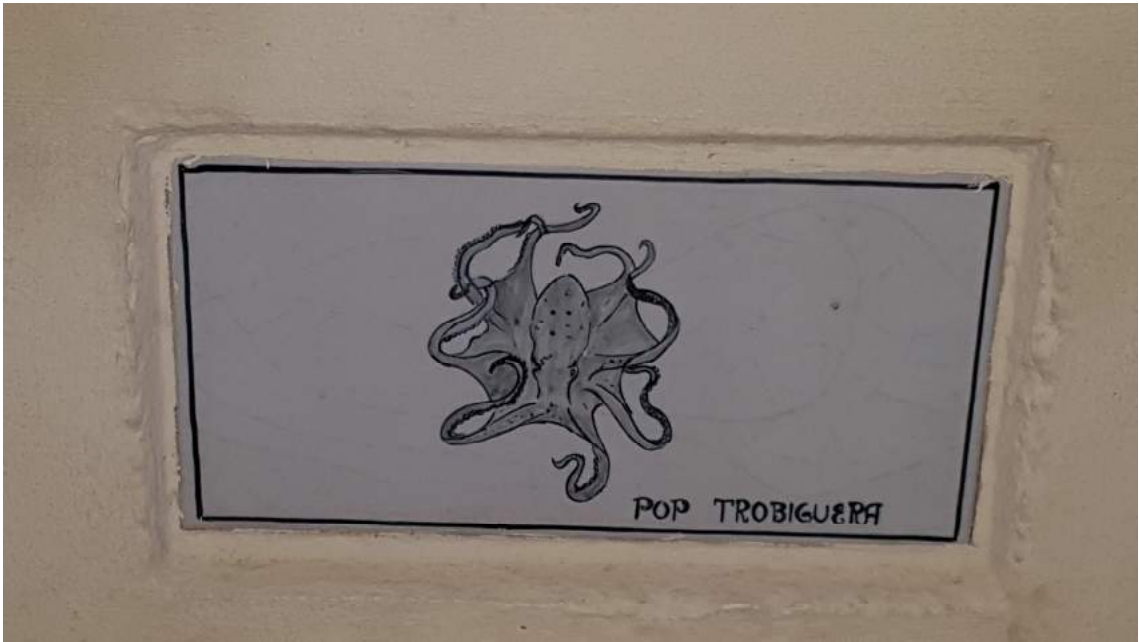


SIPIA



PAGELLIDA







POTA



PEU DE CABRIT







ESCUPINYA GRAVADA



ENCLOTXA



DATIL



CORNET DE TAP



CALAMAR



CORNET



ЛАГОСТА



ГАМБА ДЕ РОСА





GALERA



GRIMALT

