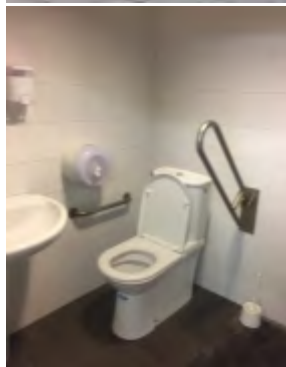


LOWER PALMA ROUTE

OIT Parc de la Mar



PRACTICAL TIPS

Parc de la Mar
Palma 07001 (Illes Balears)

Phone: 902 102 365

Email: palmainfo@palma.es

Opening hours: 09:00 to 20:00
(Monday to Sunday)

PHYSICAL ACCESSIBILITY

ACCESS

- Ramp width 90 cm, length 4.50 m and inclination 5.5 %. Turning radius \emptyset 1.38 m. Double railing 1 m and 69 cm.
- Counter height 95 cm (no space at the counter adapted for wheelchair users).

Note: This is an outdoor office, so it is not accessible through a door.

TOILET ADAPTED FOR VISITORS WITH DISABILITIES

Toilet reserved for wheelchair users with SIA sign.

Door with 83 cm opening width to the inside.

No turning radius of \emptyset 1.50 m.

Lateral approach 1.26 m.

Toilet height of 85 cm.

Lower access area 68 cm high and 20 cm deep.

Note: The toilet is located in the public car park. To get there from the OIT, you must pass through the Parc de la Mar, which has a cement pavement with many degraded and irregular areas, unmarked slopes and large grids with holes of 2-3 cm.

ACCESS FOR PERSONS WITH VISUAL IMPAIRMENT

No tactile information and/or Braille. The floor is homogeneous and has no joints, although there are uneven areas that are not marked as steps; the tables and chairs of the bars could make it difficult to go to the toilet.

ACCESS FOR PEOPLE WITH HEARING IMPAIRMENT

No adapted information and the staff who serve the public have not received training in sign language.

Avinguda Antoni Maura



PHYSICAL ACCESSIBILITY

Unlimited section for vehicles with a right-hand pavement at double height, one of 7.50 m width (6.30 m free width) and one of 8.50 m (4.50 m free width), and a left-hand pavement of 4.50 m. Flat stone pavement that does not hinder walking, with lowered fords without a guidance system for the blind. Presence of 2.5 cm drainage holes and levelling in tree holes.

ACCESS FOR PERSONS WITH VISUAL IMPAIRMENT

Homogeneous floor without guide system for the blind in lowered fords. Presence of street furniture on the sides (benches, flowerbeds, planters, wastebaskets, street lighting, bar terraces, park accesses, bicycle parking) that do not hinder walking.

ACCESS FOR PEOPLE WITH HEARING IMPAIRMENT

Signals for vehicles indicating the direction of nearby tourist attractions and/or buildings of public interest

Passeig Sagrera - Plaça Drassana - Carrer Llotja



PHYSICAL ACCESSIBILITY

PASSEIG SAGRERA

Street type: Pedestrian and vehicle street
 walking width: 6,13 m
 type of pavement: tiles that do not generally hinder walking
 Lowered fords: yes. With non-standard guidance system for the blind Incline: 6%.
 length: 60 cm
 Slope of the road: no significant gradient. Grid: yes
 Holes 2-3 cm. Bollard: no
 Tree barrel: with lower skirting
 Backless benches with side access of 65 cm and a height of 44 cm. No adapted furniture.



PLAÇA DRASSANA
<p>Road type: pedestrians and vehicles with restrictions Pavement width: 3.63 m, reduced to 1.50 m by terraces and to 82 cm at the entrance to the square (paved pavement from Passeig Sagrera) Type of pavement: concrete floor, which generally does not obstruct walking. Turning radius in the corners > 1.50 m. Pavement and square at the same height - Slope of the road: slight descent towards Passeig Sagrera. Grid: yes, holes of 2-3 cm. Bollard: 65 cm high and irregularly arranged.</p>
CARRER LLOTJA
<p>Road type: pedestrians and vehicles with restrictions Width of the pavement: ≥1,30 m (reduced to 1,16 m if bollards are present). Type of pavement: paved pedestrian area, which generally does not obstruct walking, and paved street, which generally does not obstruct walking. Turning radius in the corners > 1,50 m. Pavement and roadway at the same level. Slope of the road: slight upward and downward slope. Grid: yes Gaps of 2-3 cm</p>
ACCESS FOR PERSONS WITH VISUAL IMPAIRMENT
PASSEIG SAGRERA
<p>From AV. Antoni Maura to C. del Consolat:</p> <ul style="list-style-type: none"> • The pedestrian walkway next to the Gabriel Roca Avinguda has a homogeneous floor without isolated obstacles or gaps; both sides of the pavement are bordered by an easily recognisable pedestal that surrounds the stone benches on its way. • The lateral pavement near "la Llotja" and other monuments has a slightly irregular floor, due to the partial displacement of square paving stones; in the first part of the pavement, before reaching Plaza de la Llotja, we find street furniture on the left and changes in level - steps and depressions in the restaurant terraces - which are not properly marked with a guidance system for the blind and/or anti-slip strips. <p>Plaza de la Llotja</p> <ul style="list-style-type: none"> • Very uneven ground with small stones rounded in relief, presence of holes. Street furniture, especially on restaurant terraces, could impede the movement of the visually impaired. The trees have construction barrels, which are easy to recognise.
PLAÇA DRASSANA
<p>- 65 cm high, irregularly arranged bollards. - Central section: Very uneven floor with small rounded stones, holes. Street furniture - irregularly arranged lathes - could impede the movement of visually impaired people. The trees have no tree barrels, which could be dangerous. - Outer ring: Predominantly regular and homogeneous soil, although it can be slippery in case of rain. Street furniture - benches - as well as furniture on terraces could impede the movement of visually impaired people. Deep tree holes</p>

CARRER LLOTJA

The road has a paved ground and the pavements are made of stone. There is no difference in height between the pavements and the part used by vehicles, which is delimited by cylindrical pegs.

ACCESS FOR PEOPLE WITH HEARING IMPAIRMENT

PASSEIG SAGRERA / PLAÇA DRASSANA / CARRER LLOTJA

Signs indicating the direction of the various points of tourist interest.

SA LLOTJA



PRACTICAL TIPS

Plaza de la Lonja, 5. 07012 Palma

Visiting hours:

April - October: 10:30 - 13:30 / 17:30 - 23:00

Nov - March 10:30 - 13:30 / 16:00 - 18:00

Closed on Mondays

Free access

www.consolat.caib.es

GENERAL INFO

La Llotja or Merchants' Hall, a Gothic-style building built in the 15th century by the architect and sculptor Guillermo Sagrera, was the headquarters of the Merchants' Association, the Contract Hall and the meeting room of the famous Consolat de Mar Court.

Inside we can enjoy a single room with a ceiling of ribbed vaults supported by helical columns, without plinth or capitals, giving the visitor the impression of being in a beautiful palm garden.

Together with the Merchants' Chapel and the Consolat de Mar building, it now forms the monumental seat of the Presidency of the Government of the Balearic Islands.



Ajuntament  de Palma

PHYSICAL ACCESSIBILITY

ACCESS

- 1.65 m access door with SIA signs. This is the side entrance, on C/ De la Llotja.
- The access on foot is flat.
- The gradient from Passeig Sagrera to Carrer de la Llotja is 8-10%.

Pavement: Cobblestones that do not hinder walking. Bollards that do not obstruct passage (82 cm high, 1.54 m between them and 1.24 m between one of them and the wall). 4 of these bollards can be removed to allow parking in front of the access door.

ACCESS FOR PERSONS WITH VISUAL IMPAIRMENT

The room is free with 6 columns, the floor is homogeneous and regular. There is no information available in tactile or Braille.

ACCESS FOR PEOPLE WITH HEARING IMPAIRMENT

Posters in various sizes with general information in several languages. No information available in sign language.

CARRER BOTERIA - CARRER MAR - PLAÇA DE LA REINA - PASSEIG DES BORN



PHYSICAL ACCESSIBILITY

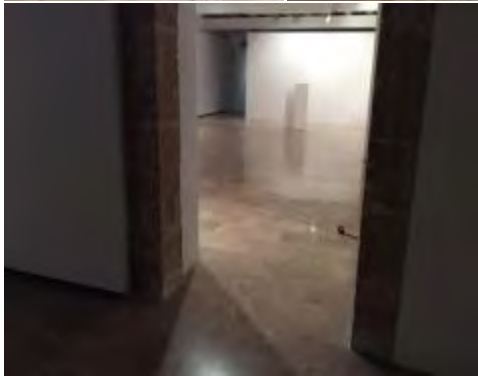
CARRER BOTERIA

Road type: for pedestrians and vehicles with restrictions
Road width: $\geq 4,50$ m. Type of road surface: paving that does not generally impede walking
Turning diameter in the corners > 1.50 m.
Road gradient: no significant gradient. Grid: yes. Gaps 2-8 cm



CARRER MAR
<p>Road type: for pedestrians and vehicles with restrictions Width: 4.65m. There are side bollards (1 section). Type of road surface: paving that does not generally hinder walking. Turning radius in the corners > 1.50m. Slope of the road: Slight incline towards Plaça de la Reina. Grid: Yes. Gaps 2-3 cm Street without pavement: Grid with larger holes.</p>
PLAÇA DE LA REINA
<p>Street type: Pedestrian and vehicle street Pavement width: ≥1,80 m reduced to 1,40 m in the passage to the Passeig des Born. Type of paving: paving that does not hinder walking (smooth stone). Turning radius in the corners > 1.50 m. Reduced fords: yes. No guidance system for the blind - Inclination: 6%. Length: 60 cm. Slope of the road: slight incline towards Plaça de la Reina Bollards: 80 cm high. Trees: unmarked bumps</p>
PASSEIG DES BORN
<p>Street type: Pedestrian and vehicle street Walking width: 12 m reduced in some sections by bar terraces up to 3.50 m. Type of flooring: Tiles that do not hinder walking. Lowered fords: yes. Slope: 6%. Length: 80 cm. Slope of the road: no significant gradient. Grid: yes. Gaps 2-3 cm. Bollard: no. Trees: unmarked bumps Benches without backrest, with side access and a height of 42 cm.</p>
ACCESS FOR PERSONS WITH VISUAL IMPAIRMENT
c/ Boteria, c/ Mar
<p>These two roads are very narrow, with homogeneous paving stones; several vehicles travel on this road and it is advisable to walk carefully or in company</p>
Pl. Reina
<p>From the square you can access several sights. The traffic lights are not accessible to visually impaired people as they do not have the control to activate them. The ground of the square is not smooth, as it is made of small rounded stones and has no holes. The garden areas are correctly delimited.</p>

CASAL SOLLERIC



PRACTICAL TIPS

Passeig del Born, 27
07012 Palma Tel: 971 722 092

Email: solleric@palma.cat

Web: casalsolleric.palma.cat

Opening hours:

Tuesday to Saturday: 11:00 to 14:00
and 15:30 to 20:30

Sundays and holidays: 11:00 to 14:30

Closed on Monday

Free admission.

The building has a library specialising in art contemporary and photography, cafeteria and shop - bookshop.

GENERAL INFO

A palace from the second half of the 18th century, in rococo style in transition to neoclassicism, belonging to the Marquis of Sóller. In 1975 it was purchased by Palma City Council and inaugurated as an exhibition centre ten years later.

The diversity of its exhibition rooms allows the palace to host a wide program of exhibitions and cultural activities. The program includes monographic exhibitions of internationally renowned artists, collective exhibitions of contemporary art and the implementation of specific projects by artists from the local art scene. It also enables small exhibitions, specific installations, special video cycles or presentations, interventions by artists living on the islands or in the city or who have developed artistic research related to the islands or the city, winners of institutional grants, etc.

PHYSICAL ACCESSIBILITY

FROM THE STREET

Passeig del Born: vehicle road with a central pedestrian area 12 m wide and side walkways over 3 m wide. All pedestrian sections are reduced by terraces, bicycle parking and street furniture. Tree barrels without grids. Homogeneous stone paving without slopes. Pedestrian walkways with lowered fords without guide system for the blind and grids with holes between 2 and 3 cm.



ACCESS TO THE BUILDING
<p>There are two access doors to the building. The door on the left side has a 12 cm high step without ramp. Access for wheelchair users is through the door on the right side, through a double glass door, 74 cm free passage from each door, with small signs. There is a small inclined area of 1 m wide, 20 cm long and 40% slope.</p>
GROUND FLOOR
<p>Counter height 1.10 m without wheelchair access. Smooth marble floor. From this room, the cafeteria, the bookshop, the lift for the upper floors and an exhibition room are accessible through a double glass door with a free passage of 74 cm each. Access to the courtyard is via an 8 m long ramp with a minimum width of 90 cm and a 15% gradient. At the end of the ramp, a double glass door with a free passage of 74 cm each. The patio has an irregular stone pavement with several slopes and grids. For access to the courtyard we recommend assistance or an escort.</p>
UPPER FLOORS
<p>Access to the lift is via a ramp with a smooth, non-slip surface, which is 1.56 m wide and 1.33 m long with a 16% inclination. Lift: width 2 m, depth 1.20 m and free passage of 1.10 cm. Buttons at a height of 1 m and railings at a height of 91 cm. With SIA signage.</p> <p>The mezzanine floor provides access to several exhibition rooms and workshops, all with smooth stone flooring, accessible via a small ramp with non-slip flooring 1.60 m wide and 1.44 m long with a 16% inclination. The passages between the rooms are over 1.40 m wide. One of the rooms is only accessible via several steps. The Planta Noble floor provides access to several exhibition rooms with a fairly homogeneous stone flooring. Some doorways are 70 cm or 90 cm wide.</p>
TOILET ADAPTED FOR VISITORS WITH DISABILITIES
<p>The toilet reserved for wheelchair users is located on the Planta Noble floor. It has SIA signs on the door. Access to the toilet is through a 90 cm long passageway and a 1.20 m long corridor through a sliding glass door with a 90 cm free passageway. Lateral access space, over 2 m, blocked by the sink. Lower access area, 76 cm high and 19 cm deep. Sink height 80 cm, no turning radius \varnothing 1.50 m.</p>
ACCESS FOR PERSONS WITH VISUAL IMPAIRMENT
<p>Due to the temporal character of the exhibitions, there are no audio guides. The floor of the building is generally homogeneous and smooth, except in the inner courtyard.</p>
ACCESS FOR PEOPLE WITH HEARING IMPAIRMENT
<p>At the entrance there is a board showing the floors and the organisation of the building. There is no magnetic loop; the staff do not know sign language. The exhibitions are temporary and/or travelling and there is no adapted information material.</p>

Carrer de la Unió - Plaça de Weyler



PHYSICAL ACCESSIBILITY

Carrer de la Unió

Road for vehicles and pedestrians, with 2-3 m wide pavements made of smooth stone paving that does not hinder walking. No significant gradient. Bollards and tree holes without grid and of shallow depth.

Lowered fords, with guidance system for the blind.

Plaça de Weyler

Pedestrian square, mainly used by the hotel industry, with smooth stone pavement that does not hinder walking. No significant gradient. Presence of terraces and tree barrels without grid and of shallow depth.

Lowered fords, with guidance system for the blind

ACCESS FOR PERSONS WITH VISUAL IMPAIRMENT

Carrer de la Unió

Mostly homogeneous floor with unevenness indicated by a guidance system for the blind. Frequent obstacles such as trees, posts or bollards as well as the high influx of people can make it difficult for visually impaired people to move on these roads.

Plaça de Weyler

Mostly homogeneous floor with unevenness, with guidance system for the blind. The high influx of people can make it difficult for visually impaired people to move on these roads.

ACCESS FOR PEOPLE WITH HEARING IMPAIRMENT

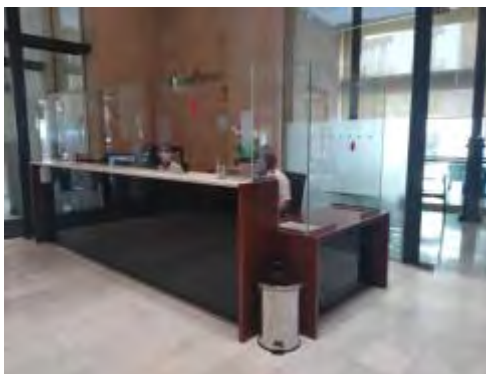
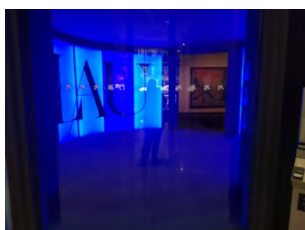
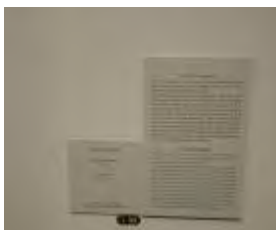
Carrer de la Unió and Plaça de Weyler

No signposting indicating the direction to nearby points of tourist interest and/or buildings of public interest.

Passion for
Palma
de Mallorca

Ajuntament de Palma

GRAN HOTEL



PRACTICAL TIPS

Plaça Weyler, 3, 07001 Palma

Phone.: +34 971178500

email:

icaixaformumpalma@magmacultura.com

Web: <http://www.caixaforum.es>

Opening hours:

Monday to Saturday from 10:00 to 20:00.

Sundays and holidays from 11:00 to 14:00.

Closed on 25 December and on 1 and 6 January.

GENERAL INFO

Caixa Forum Palma, located in the Gran Hotel. The Gran Hotel, the work of the architect Lluís Domènech, is one of the first Art Nouveau buildings in Palma (1903) and a precursor of Mallorcan hotels. It currently houses the Fundació la Caixa in Palma and has a permanent collection of the painter Anglada Camarassa. The building has a number of exhibition rooms and spaces suitable for organising other events and cultural activities. The different rooms are distributed over the 3 floors of the Grand Hotel, which are dedicated to these activities. The exhibition area is 260 m² per floor.

The building offers space for 2 or 3 temporary exhibitions in addition to the permanent exhibition.

The Gran Hotel de Palma is one of the most emblematic Art Nouveau buildings in the city. It has been recovered by the Obra Social.



PHYSICAL ACCESSIBILITY
ACCESS
<p>Access from the pavement via stairs (it has a lift measuring 100 x 80 cm). Two automatic doors with 181 cm free passage. Main counter 110 cm high and partially adapted with an auxiliary table 80 cm high.</p>
Temporary ground floor
<p>Carpeting. Wide passage between rooms Lift, with button panel 135 cm high and 74 cm passage door. Cabin of 128x124 cm without railing Inner button panel 130 on level 2. Access to the cafeteria is possible from inside the building. Cafeteria users have access to the toilets in the exhibition area.</p>
Floor -1
<p>Toilets for wheelchairs in the ladies and gents toilets, without SIA signage Turning radius 145 cm WC height of 54 cm and 90 cm washbasin height.</p> <p>Auditorium floor -1 Ramp 450 cm long, 50 cm high and 137 cm wide, with railing on one side 90 cm high. Two 75 cm wide double doors. Double ramp: Ascent ramp 386 cm long, 30 cm high and 125 cm wide, connected to another descent ramp 120 cm high and 960 cm long.</p> <p>No space reserved for wheelchairs</p>
Floors 1 (temporary and permanent) and 2
<p>Smooth marble floor. Passages of at least 120 cm.</p>
ACCESS FOR PERSONS WITH VISUAL IMPAIRMENT
<p>Audio-guides; guide dogs are welcome.</p>
ACCESS FOR PEOPLE WITH HEARING IMPAIRMENT
<p>Magnetic loop throughout the building. The staff does not know sign language. They do not have information adapted to sign language or Braille. Subtitles of videos available in writing. Guided tours in sign language for groups on request and advance booking.</p>

Plaça del Mercat



PHYSICAL ACCESSIBILITY

Unlimited vehicle road with 4.60 m wide pavements on the right side (2.15 m free width) and 2.50 m on the left side. Stone pavement that does not obstruct walking, lowered curbs with guidance system for the blind and tree barrels in the central area.

ACCESS FOR PERSONS WITH VISUAL IMPAIRMENT

Mostly homogeneous ground, but with numerous obstacles (kiosk, benches, streetlamps, bus stops, cabins) that can make walking around difficult. Guidance system for the blind in lowered curbs

ACCESS FOR PEOPLE WITH HEARING IMPAIRMENT

No signposting indicating the direction of nearby tourist points of interest and/or buildings of public interest.

Carrer de la Riera



PHYSICAL ACCESSIBILITY

Unlimited vehicle road with 2.80 m wide pavements on the right side (2.45 m free width) and 3.35 m on the left side. Stone pavement that does not obstruct walking, lowered fords with guidance system for the blind, bollard.

ACCESS FOR PERSONS WITH VISUAL IMPAIRMENT

Mostly homogeneous floor, which does not hinder walking, with guidance system for the blind in lowered fords.

ACCESS FOR PEOPLE WITH HEARING IMPAIRMENT

No signposting indicating the direction of nearby tourist points of interest and/or buildings of public interest.

LIFT PARKING PLAÇA MAJOR - LA RAMBLA



PHYSICAL ACCESSIBILITY

CAR PARK PLAÇA MAJOR. Outdoor lift

Access: From a paved pavement that does not hinder walking, 1.49 m wide. Small inclined surface 1.63 m wide, 60 cm long and 20% slope.

Access to the car park by a sloping surface from 1.05 m to 1.60 m wide, 2s0 m long and 6.5% slope.

In the parking areas the space is divided between pedestrians and vehicles.



There are 3 parking spaces reserved for wheelchairs on each floor.
 Note: Access to the lift is through a 1.65 m wide lobby and 80 cm wide doors.
 The dimensions of the lift are 1.40m x 1.00m, with 80cm of free passage and railings at a height of 87cm. Without signal system.

LA RAMBLA

Type of road: pedestrian and vehicle road It has 2 steps on one side (height 13 cm and 3-12 cm). The other side has a lowered ford.
 There is a 2.31 m long ramp, with a resting section of 2.40 m and a height difference of 35 cm.
 Walking width: 6.50 m, reduced to 3.53 m by flower stands.
 Type of pavement: Tiles that generally do not obstruct walking.
 Turning radius in the corners: > 1.50 m. Reduced fords: some (guide system for the blind in the fords).
 Guide system for the blind: 6-10% inclination.
 Length: 60-100 cm.
 Road gradient: no significant gradient.
 Trees: with unmarked bumps.
 Benches with backrest with side access and a height of 43 cm.

ACCESS FOR PERSONS WITH VISUAL IMPAIRMENT

Braille system inside.

- The central pedestrian walkway has a homogeneous floor, the sides have small, unmarked steps and the tree barrels are not at the same level as the pedestrian area. The street furniture is located on the sides of the street and does not obstruct the walking of visually impaired people, although the furniture of the flower shops occupies the central part of the first half of the pavement and may obstruct walking, especially when there are many visitors.
- The right-hand pavement (towards Carrer Oms) is fairly regular with no gaps or unmarked Difference in altitude, with a narrow initial section (up to Carrer de les Tereses). The street furniture does not obstruct walking and is located on the left side of the pavement.
- The left pavement (towards carrer Oms) is narrow and slightly uneven due to the partial displacement of the pavement; there are no trees or furniture.

Presence of tree holes in the pavement, partly with deep steps

ACCESS FOR PEOPLE WITH HEARING IMPAIRMENT

Lift with glass walls that allow visual contact to the outside
 Posters of various sizes with information of general interest.

ESGLÈSIA DE SANTA MAGDALENA (CHURCH)



PRACTICAL TIPS

Plaça de Santa Magdalena s/n, 07012 Palma, Illes Balears

Phone: 971 715 154

Visiting hours:
From 07:30 to 13:15 and from 17:30 to 19:30 hrs

GENERAL INFO

Santa Magdalena is currently a nunnery, and its church contains the chapel with the imperishable body of the Mallorcan nun Santa Catalina Tomás. The building (former hospital) is in Gothic style and was built in the early 14th century, while the temple was built in late Baroque style in the mid-18th century.

PHYSICAL ACCESSIBILITY

CARRER SANTA MAGDALENA -ESGLÈSIA DE SANTA MAGDALENA (CHURCH OF SAINT MAGDALENA)

Two steps, the first 6-8 cm (outside) and the second 20 cm (inside)
Road type: for pedestrians and vehicles with restrictions (one cobbled section and one paved section).
Not suitable for disabled people.
Width: 1.00 m and then narrower. There is a grid on the asphalt.
Turning radius at the corners: > 1.50 m.
Slope of the road: moderate gradient towards La Rambla. Grid: yes. Gaps of 2-3 cm.
2 cypresses with tree barrels
Width of the pavement closest to the entrance: 1.61 m.



CARRER DE SANT JAUME
Pedestrian street. Width: 3.63m (measured at the Gloria Hotel). No pavements.
ACCESS TO THE CHURCH
<p>Redesigned for the disabled.</p> <p>Bollards. The distance between them is 1.83 m.</p> <p>12 cm step</p> <p>50 cm horizontal and 14 cm vertical ramp.</p> <p>Access ramp to the church: 88 cm horizontal and 18 cm vertical</p> <p>Access door to the church made of wood. It has a pulley mechanism with a stone as counterweight, which makes it difficult to open. Free passage 1,10 m</p>
INSIDE THE CHURCH
<p>Centre aisle accessible. Lateral corridors not accessible.</p> <p>There is a stone platform in front of the church door and another small access ramp to this platform.</p>
ACCESS FOR PERSONS WITH VISUAL IMPAIRMENT
<p>Calle San Jaume is a pedestrian street with restrictions on the passage of vehicles and has no pavements on either side along its entire length; Calle Santa Magdalena has a section without pavements and where there are pavements, it is not suitable for disabled traffic; as a rule, vehicles are parked on one side or part of the pavement, which makes it difficult for pedestrians to move around.</p>
ACCESS FOR PEOPLE WITH HEARING IMPAIRMENT
<p>Few posters of different sizes with information of general interest</p>

ESGLÈSIA DE SANT JAUME



PRACTICAL TIPS

Carrer Sagristia de Sant Jaume, 10, 07012 Palma de Mallorca, Islas Balears

Phone: 971 724 375 / 971 723 130

E-mail: santjaumeparroquia@gmail.com

GENERAL INFO

The church of Sant Jaume is one of the four oldest parishes in Palma, which was completed in the 16th century after a slow construction phase.

It is in the Mallorcan Gothic style and was named after King Jaume I the Conqueror, although elements of the Baroque style can be found, such as two of the remains inside the church and the Sagrario chapel (17th century). The tomb of the Cotoner family is also noteworthy, where the hearts of the great masters of the Order of Malta, Rafel and Nicolau Cotoner, are kept.

PHYSICAL ACCESSIBILITY

CARRER SANT JAUME -ESGLÈSIA SANT JAUME (SANT JAUME CHURCH)

Road type: for pedestrians and vehicles with restrictions. Bollards.

Street width: 3.39 m (measured at the Born Hotel, on arrival at Plaza S. Carlos).

Type of pavement: cobbled, which can make walking difficult.

Turning radius at the corners: > 1.50 m. Slope of the street: slight incline towards Plaça de la Reina. Grid: yes, holes of 2-3 cm.

Length of the ramp: 3.97 m x 1.08 m. Unevenness of 16 cm.

Access to the church: Access to the elevated pavement is through a lateral sloping surface 1.12 m wide, 30 cm long and 9% incline.

Door of 90 cm with a step of more than 5 cm.



Ajuntament  de Palma

ACCESS FOR PERSONS WITH VISUAL IMPAIRMENT

c/ Sant Jaume: The floor is paved with smooth stones and slightly irregular, there are no pavements and it is walkable. Complete absence of street furniture, trees and furniture of bars and terraces.

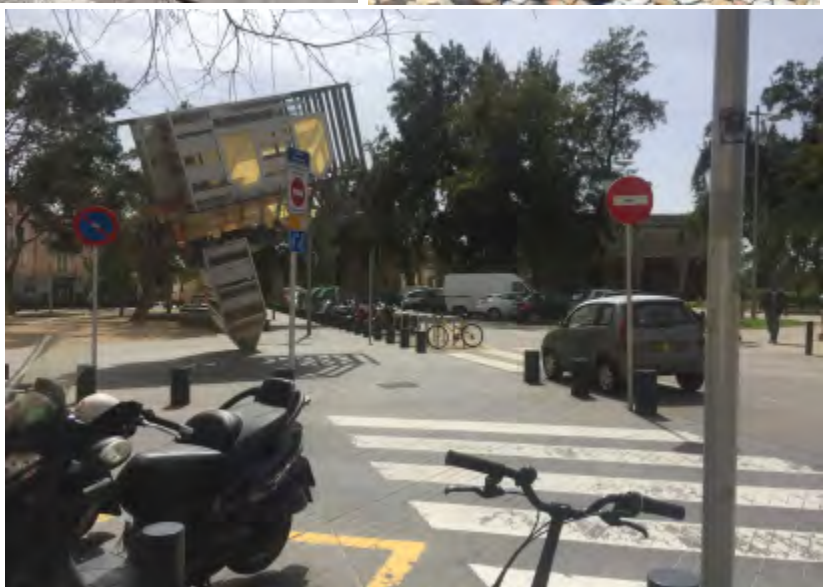
ESGLÈSIA DE SANT JAUME CHURCH: Homogeneous floor without gaps or unevenness. The position of the central furniture is orderly and easy to recognise. There is furniture and columns on the sides that do not obstruct movement or hinder it in any relevant way. There are no dangerous outriggers for the movement of blind or visually impaired people. Interior lighting is sparse.

ACCESS FOR PEOPLE WITH HEARING IMPAIRMENT

c/ Sant Jaume: Signs of different sizes with information of general interest.

ESGLÈSIA DE SANT JAUME: The fairs are not held in sign language and there is no information material accessible to deaf people, although the environment is small and very intuitive.

Plaça Joan Carles I - Jaume III - Plaça Porta de Santa Catalina



PHYSICAL ACCESSIBILITY

PLAÇA JOAN CARLES I

Type of road: for pedestrians and vehicles

Pavement width: 5.25 m, on the sides of the fountain reduced to 1.50 m and 1.22 m.

Type of paving: paving that does not obstruct walking.

Turning radius at the corners: > 1.50 m. Reduced fords: yes.

Without guidance system for the blind. Inclination: 6%, length: 60 cm

Slope of the road: no significant gradient.

Kerb of 15cm.

Ford lowered at the traffic lights to cross the road.

Manhole covers and tree barrels

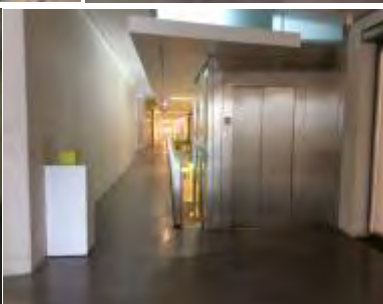


JAUME III
<p>Type of road: for pedestrians (in the 'arcades') and vehicles Pavement width: under canopies 3.93 m, in some places reduced to 3.50 m. Outer pavement of 1.85 m, reduced by street lighting and rubbish bins up to 86 cm. Type of pavement: stone slabs that do not obstruct walking. At the crossroads with some alleys we find some small 2 cm high steps and cobblestones that can make walking difficult. Turning radius at the corners: > 1,50 m. Lowered fords: yes, with a guidance system for the blind that is not standard Inclination:6%. Length:60-80cm Slope of the road: moderate gradient towards Passeig Mallorca. Grid: yes. Gaps of 2 cm. Tree barrels: some with a partial grid and others without</p>
PLAÇA PORTA DE SANTA CATALINA
<p>Road type: for pedestrians and vehicles with restrictions Pavement width: 1.70 m reduced to 1.23 m in some places. Type of road surface: paving that does not hinder walking. Turning radius at the corners: ≥ 1,23 m. Reduced fords: yes. No guidance system for the blind. Inclination: The pavement is at the same level as the road. Slope of the road: moderate gradient. Grid: yes. Gaps of 2 cm. Bollard: 75 cm high. The central area of the square is paved with sand and loose gravel, and to get there you have to go down a slope of 7 cm. Tree barrels: with unmarked slope.</p>
ACCESS FOR PERSONS WITH VISUAL IMPAIRMENT
PLAÇA JOAN CARLES I
<p>The square is passable for vehicles in its inner core and for pedestrians on the side pavements. The presence of street furniture and terraces is easy to detect, although it could make it difficult to move around in case of a high influx of people.</p>
JAUME III
<p>Both pavements are wide and the ground is homogeneous and regular. The street furniture does not obstruct the movement of the visually impaired, but the furniture in bars and terraces could make walking difficult in some places. There are no bumps or gaps.</p>
PLAÇA PORTA DE SANTA CATALINA
<p>The soil is not homogeneous and has some small holes. The street furniture around the square could make it difficult to move around, as it is neither signposted nor set up in an orderly fashion. Cylindrical cones surrounding the centre of the square, 0.51 m high and 1.20 m apart. The circular tree barrels are not at ground level and are without grid. To enter the sandpark you must have access from the top of the park. Distance of 1.45 m from the lamppost to the pot (shop).</p>
ACCESS FOR PEOPLE WITH HEARING IMPAIRMENT
PLAÇA JOAN CARLES I / JAUME III / PLAÇA PORTA DE SANTA CATALINA
<p>Signs indicating the direction of the various points of tourist interest.</p>

Passion for
Palma
de Mallorca

Ajuntament  de Palma

MUSEO ES BALUARD



PRACTICAL TIPS

Plaça Porta de Santa Catalina, 10
07012 Palma de Mallorca

Tel: 971 908 200

e-mail: museu@esbaluard.org

Internet: www.esbaluard.org

Opening hours:
Tuesday to Saturday: 10:00 to 20:00
o'clock
Sunday: 10:00 to 15:00
Monday, closed

The museum has a cafeteria and a shop

GENERAL INFO

Es Baluard is a modern and contemporary art museum, one of the most outstanding of its kind in Spain. It is located in Palma and was opened in 2004. It is the largest museum on the Balearic Islands and hosts a collection of more than 500 works of modern and contemporary art, which are related to artists from the islands and/or with international connections. Es Baluard is a catalyst and mediator of history, contemporary trends and education through exhibition programs, activities and educational cycles, as well as a living laboratory for current creative practices. The building is located in an area of archaeological value. With the recovery of this area, the history of the Sant Pere neighbourhood will also be restored. Its origins lie in the Islamic period, but it dates from the Renaissance, when it was made possible and is growing, parallel to the reform process of the wall and therefore the construction of the Baluard de Sant Pere. One of the rooms in the museum is an old freshwater cistern, the construction of which was completed in the 1640s.

PHYSICAL ACCESSIBILITY

ACCESS FROM THE STREET

Plaça de la Porta Santa Catalina: Area for pedestrians and vehicles with limited use. The entire square has a slight slope and is at the same level, except for a central part where there are steps. Central paving is made of compacted sand, loose gravel and paving of homogeneous, paved concrete, without any pedestrian signs. The pedestrian areas are separated from the vehicles by 40 and 75 cm high bollards. Trees with tree barrels without signs. Unordered presence of sculptures, protrusions on the pavement, various pavements and street furniture.



ACCESS TO THE BUILDING
<p>Access to the site is via a 4.80 m wide passageway with an 80 cm high central bollard and homogeneous stone paving. Access to the building is via a 50 cm long non-slip metal ramp with an inclination of 14%, followed by a heavy double swing door with a free passage of 90 cm.</p>
1ST FLOOR (GROUND FLOOR)
<p>Plain and homogeneous concrete floor throughout the building and plain wood on the ramps. There is no room at the counter adapted for wheelchair users, although the space for passing through the counter could be used for this purpose, as it is 75 cm high, 69 cm lower and free at the bottom. Wheelchairs can be rented. The cafeteria, shop, auditorium and several exhibition rooms are accessible from this floor. Access to the auditorium through a door with a free passage of 85 cm, the auditorium has an emergency exit directly to the street. Exhibition rooms with passages between rooms of more than 2 m.</p>
BASEMENT AND FRESHWATER CISTERN
<p>It is a unique room with polished concrete paving. The cistern can be accessed by an internal lift or by a 5.20 m long and 1.60 m wide ramp with an 11% inclination. The cistern is a large, unique room with a fairly regular stone paving and an emergency exit that leads directly to the exit via a platform lift.</p>
2ND FLOOR
<p>Plain and homogeneous concrete flooring and plain wood on ramps. Exhibition rooms with passages between rooms of more than 2 m.</p>
TERRACES
<p>Access is via a 9.90 m long and 1.60 m wide internal ramp with an 8% gradient and plain wooden floor. Heavy swivel door, which does not remain open, with 1 m free passage. Outer ramps 20 m long and 1.40 m wide with 7% slope and wooden floor. On some sides there is a one-sided height difference of 29 cm on one side. Wheelchair users must return the same way, turn of Ø 1.80 m, it is not possible to access the museum terrace from here.</p>
ELEVATOR AND RAMPS
<p>To get from one floor to another, you can use the elevator or ramps. Elevator with glass wall: width 1.16 m, depth 1.44 m. Free doorway 90 cm. Push-button panels 135 cm high. With handrail at 93 cm height. Without SIA signage. The ramps consist of several sections, each more than 20 m long and more than 1 m wide, with 2 m landings and a gradient of 8%. Plain wooden floor and handrail. Note: There is an elevator to access the cistern from the outdoor terrace, but it is only used for events in this area.</p>
BARRIER-FREE TOILETS

The toilets reserved for wheelchair users are located on the 1st floor (ground floor). There are no SIA signs and they are located in the toilets of both genders. General door with 76 cm inside opening. Door to toilet cabin with a free passage of 90 cm.

Lateral access space of 77 cm. Lower access area 71 cm high and 32 cm deep. Height of the toilet outside the cabin 91 cm.

On floor -1 (basement) there is a barrier-free toilet with SIA signage; it has an internal opening and a passage of 80 cm. The width of the bathroom is 1.70 m and the average depth is 2.15 m. Wheelchair users cannot turn in a diameter of 150 cm.

PHYSICAL ACCESSIBILITY FOR VISUALLY IMPAIRED VISITORS

Due to the temporary nature of the exhibitions, they do not have an audio guide. The information on the artworks is not in Braille.

PHYSICAL ACCESSIBILITY FOR VISITORS WITH HEARING IMPAIRMENT

There is no magnetic loop and the staff does not know sign language. In each room there are several information posters and brochures with written information.

Passeig Mallorca



PHYSICAL ACCESSIBILITY

Pedestrian area 12.30 m wide and 9 m wide. Smooth stone pavement that does not hinder walking.

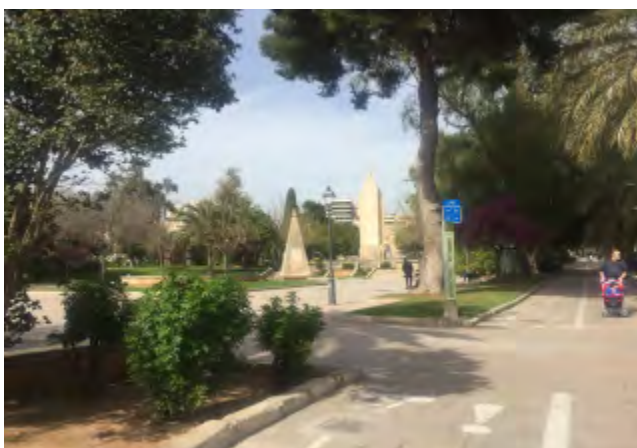
ACCESS FOR PERSONS WITH VISUAL IMPAIRMENT

Homogeneous ground that does not make walking around difficult, with benches and lampposts and occasional obstacles such as street markets or stalls.

ACCESS FOR PEOPLE WITH HEARING IMPAIRMENT

Signs indicating the direction of nearby tourist points and/or buildings of public interest.

Sa Feixina - Avinguda Gabriel Roca



PHYSICAL ACCESSIBILITY

SA FEIXINA

Type of road: Park for pedestrians with painted cycle path, without spatial separation.
 Width of the pavement: 2,17 m. Type of road surface: Pavement that does not generally impede walking.
 Turning radius in the corners: $\geq 2,20$ m.
 Slope of the road: steep gradient towards Gabriel Roca Avenue.
 Grid: yes, 2 cm holes.
 The three levels are accessible via inclined surfaces of about 6-8%.
 Tree holes: with lower base (there are no trees in the park), of shallow depth.

AVINGUDA GABRIEL ROCA



<p>It is necessary to erect temporary ramps when road works are carried out. Type of road: pedestrian and vehicle road. Irregular road surface. Pavement width: 3.80 m (narrowing of the stairs leading up to the Baluard to a maximum of 2.10 m). Type of road surface: Tiles that can make walking difficult on some sections due to damage. Turning radius in the corners: $\geq 2,20$ m. Reduced fords: yes. Slope: 6%. Length: 60-80 cm. Slope of the road: no significant gradient.</p>
PASSEIG SAGRERA
<p>1.40 m long and 0.19 m high ramp. Pavement with open joints. Differentiation between two sections: one more irregular and one more homogeneous.</p>
ACCESS FOR PERSONS WITH VISUAL IMPAIRMENT
SA FEIXINA
<p>The garden areas are delimited by a raised base, but level changes such as stairs and/or ramps are not marked. The ground is homogeneous, smooth and without holes.</p>
AVINGUDA GABRIEL ROCA
<p>Regular paving with some holes. No trees or street furniture that could make it difficult to move around.</p>
PASSEIG SAGRERA
<p>The floor is somewhat irregular and smooth, in rain and/or dampness it could be slippery. The tree holes are not even, but their depth is not relevant. The garden-like sides are delimited by a relief-like skirting board, which is easy to recognise. The street furniture is located on the sides and does not hinder the movement of visually impaired people. In a few months of the year, street markets and/or handicraft stands are set up, which, together with the high influx of people, could make it difficult for people to move around independently.</p>
ACCESS FOR PEOPLE WITH HEARING IMPAIRMENT
SA FEIXINA / AVINGUDA GABRIEL ROCA / PASSEIG SAGRERA
<p>Signs indicating the direction of the various points of tourist interest.</p>